



ATA ASSOCIATES
FORENSIC ENGINEERING

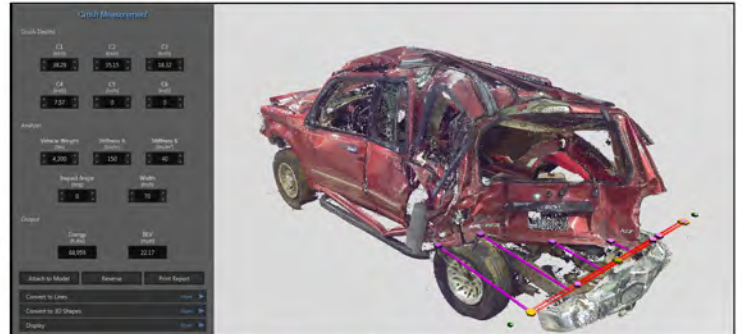
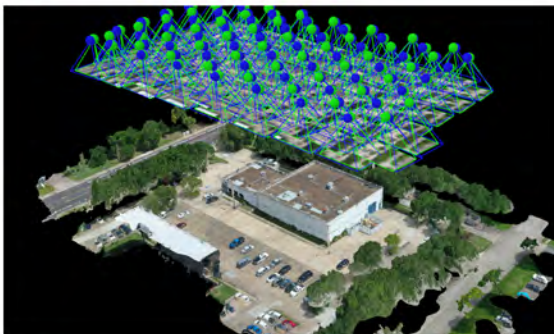
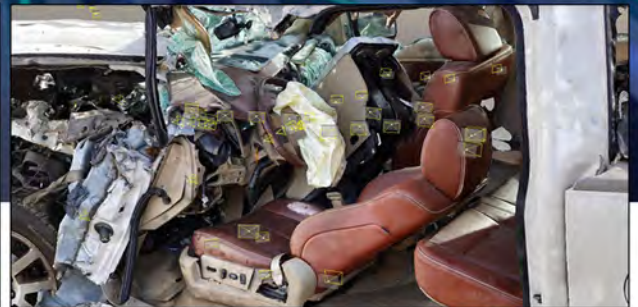
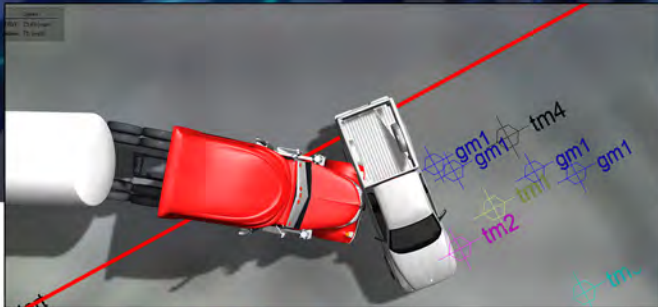
281-480-9847

877-480-9846

ATA STAYS AHEAD OF THE GAME



FORENSIC TECHNOLOGY PAVES THE WAY TO SUCCESS

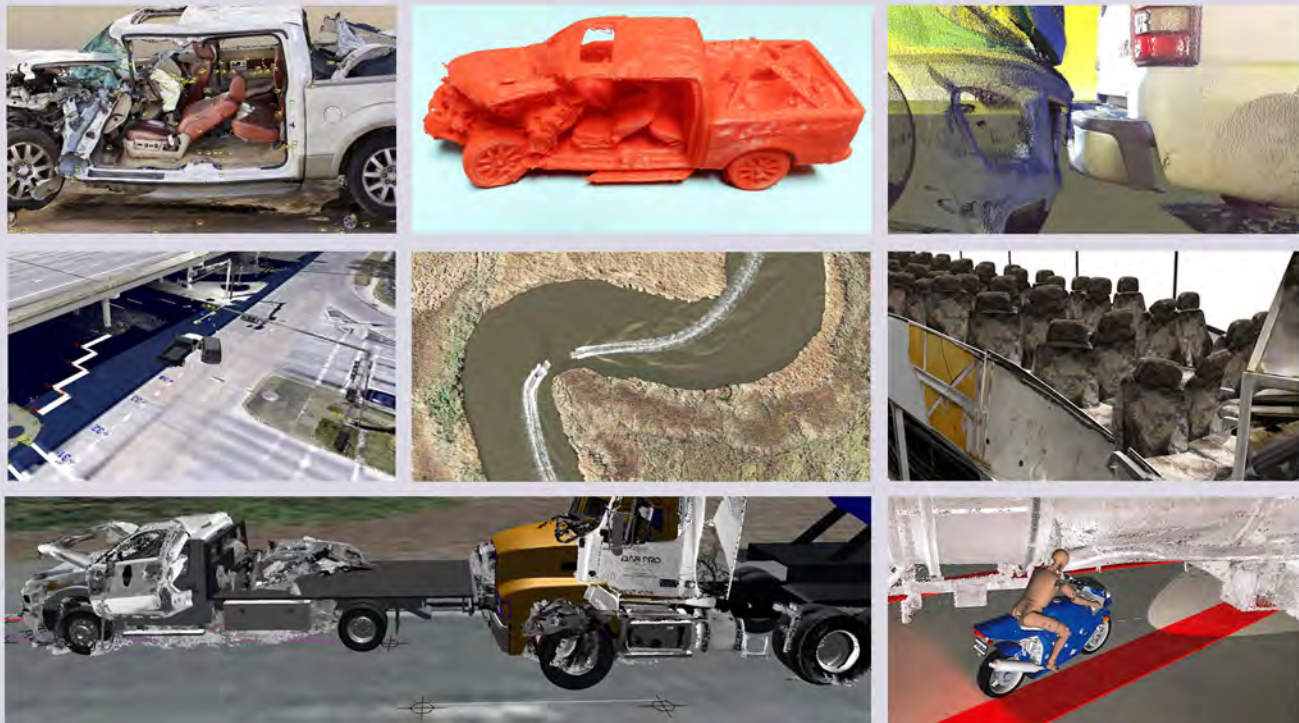


- Body_Loc_OldPrecise
- Sectors Modify
- Sectors
- Body_Loc_Buffer
- CAD
- c2010Russian_Report_coordv3
- c2010Russian_Reportxy_XYTableToPoint4
- 2010 Russian Report CAD
- GoogleEarth KMLs
- Punky_brass_convert_H6-H6_15
- SmallGIS3dlet
- WreckFragments
- Wreckage_3
- gndcopy_350KtoFeatures
- AerialSectorLines
- aerial.png
- Satellite Ortho Photos

1:100,473 | 32°59'E 54°49'27"N

OBJECTID	Shape	comment	don	dat	sector	description
1	Point	<Null>	<Null>	<Null>	1	Arms and torso near right landing gear seen in photos 100_0350 and 100_0351
2	Point	<Null>	<Null>	<Null>	2	Body with legs arm and torso near main fuselage as seen in photos 100_0391 393 395
3	Point	<Null>	<Null>	<Null>	3	Body near hill and northern section of sector 3 seen in photo DSCF0401
4	Point	<Null>	<Null>	<Null>	3	Body fragments with debris near water behind hill photos DSCF0404 and DSCF0405
5	Point	<Null>	<Null>	<Null>	3	Body torso under water female near seat cushion in photo DSCF0406

We've been staying at the forefront of developing technology in order to improve efficiency and to mitigate the effects of being isolated in the field or when having to use a combination of facilities to perform our work. In fact, "working remotely" is hardly a new component of ATA's work flow.



ATA staff is accustomed to coordinating and digitally networking across great distances in order to get work completed in a timely and efficient manner. Imaging and media integration software such as Context Capture, ArcGIS, Input-Ace, FARO-Zone, ACDSee, Pix 4D Mapper and a 3D printer have been added to ATA's arsenal. These tools contribute to both project efficiency and improved image quality.



THE ATA PROCESS

GET TO THE SCENE QUICKLY / GATHER AVAILABLE DATA

QUICK RESPONSE PROGRAM

THOROUGH, INTENSIVE INVESTIGATION AND FORENSIC PROCESS

SYSTEMATIC ORGANIZATION

SCIENCE, TECHNOLOGY, ANALYSIS, MULTIMEDIA

ESTABLISH SOLUTIONS

MAKE THE CASE



Our staff members have been working together as a unit on a long term basis, with most of our employees having worked at ATA for over 15 years. Whether sitting together at a conference table or spread across the country; we know each other's capabilities and can coordinate seamlessly.

Give ATA a call today. We look forward to hearing from you, so we can work together to achieve success.

WWW.ATAASSOCIATES.COM