



ATA ASSOCIATES, INC.

BUILDING CONSTRUCTION FORENSIC ENGINEERING

MAKE THE CALL:

MAKE YOUR CASE!



STRUCTURAL DESIGN FRAMING WATER INTRUSIONS DRAINAGE
HYDRAULIC STRUCTURES FOUNDATIONS BULKHEAD & POOL DESIGN
BEAM ANALYSIS ROOFING INSPECTIONS SANITATION DESIGN
HYDROLOGY METALLURGY RETAINING WALLS FIELD REVIEWS

WWW.ATAASSOCIATES.COM

281-480-9847

877-480-9846

ATA is a true full service accident reconstruction and forensic engineering firm that has been enhancing and evolving investigation and analysis techniques and processes for over 50 years. Between our staff and our associated team members, we are directly involved in every aspect of an investigation. This includes comprehensive quick response services, evidence and resource organization and documentation, full scale product and/or materials testing and analysis, and the development of presentation materials. The result is that even while employing a wide range of expertise and resources; ATA can be your point of contact throughout the entire course of an investigation.

HOW ATA GETS THE JOB DONE

GET TO THE SCENE QUICKLY / GATHER AVAILABLE DATA

QUICK RESPONSE PROGRAM

THOROUGH, INTENSIVE INVESTIGATION AND FORENSIC PROCESS

SYSTEMATIC ORGANIZATION

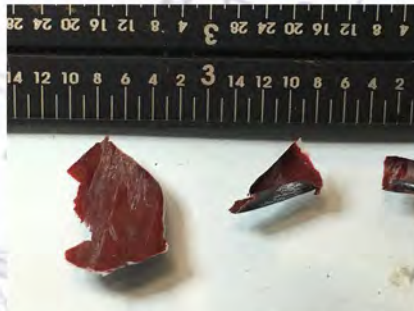
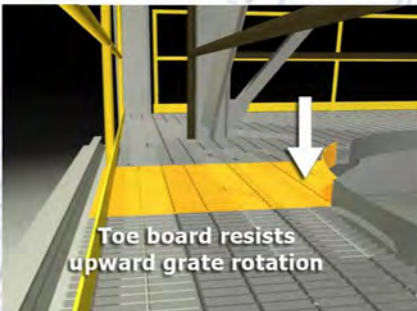
SCIENCE, TECHNOLOGY, ANALYSIS, MULTIMEDIA

ESTABLISH SOLUTIONS

49 YEARS OF COMPLETE SERVICE FOR OUR CLIENTS

ACHIEVE YOUR TARGETS

Over the last 50 years, in the course of working on over 7000 cases, ATA has developed strong and lasting relationships with some of the nation's top experts and consultants across a variety of forensic and investigative disciplines. During the past year, in the interest of supplying our clients with enhanced services, ATA has been bringing these talented and experienced individuals together to establish a team approach to our investigations. This includes our Building Construction Team made up of experts from across the country who have backgrounds across a wide variety of construction disciplines.



WWW.ATAASSOCIATES.COM

281-480-9847

877-480-9846