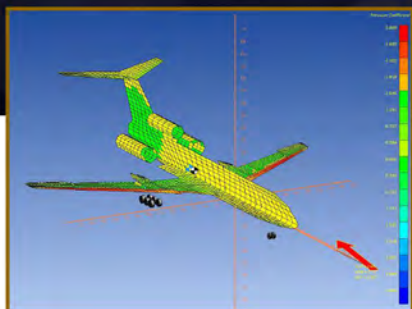
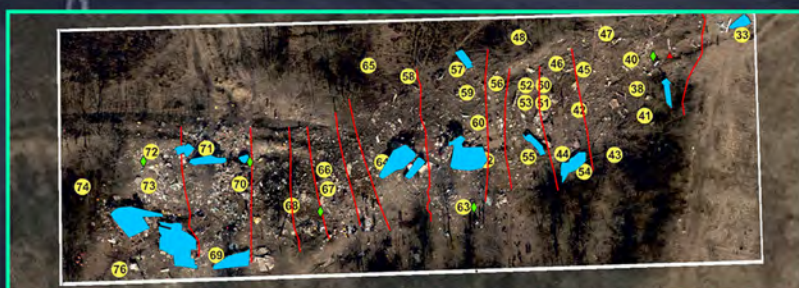
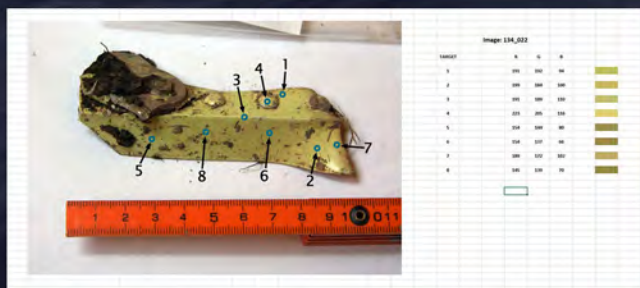




# INTRODUCING THE ATA "AVIATION DREAM TEAM"



**50 YEARS OF FORENSIC INVESTIGATION EXPERIENCE COMBINED WITH AN ASSEMBLAGE OF AN INTERNATIONAL TEAM OF EXPERTS EQUIPS ATA TO PROVIDE A VAST POTENTIAL OF DATA ANALYSIS AND LITIGATION SUPPORT**



[www.ataassociates.com](http://www.ataassociates.com)

281-480-9847



877-480-9846



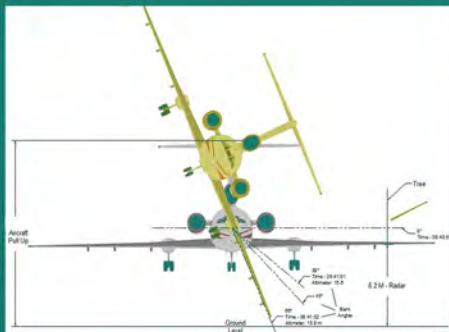
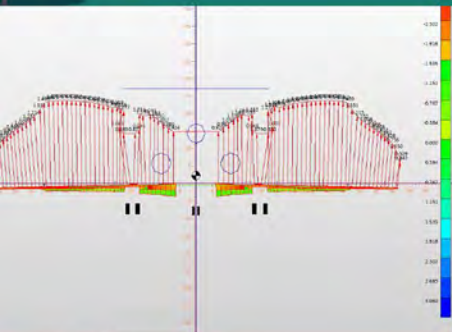
# ATA'S ENHANCED AEROSPACE & AVIATION SERVICES

## OUR "DREAM TEAM" SPECIALIZES IN AN ARRAY OF INVESTIGATORY DISCIPLINES

- ON BOARD SYSTEMS PERFORMANCE
- AIRCRAFT OPERATIONS PERFORMANCE
- CREW OPERATIONS
- DISPLAYS & CONTROLS CONFIGURATION
- AIRCRAFT ACCIDENT INVESTIGATION
- HUMAN FACTORS
- VISUAL & AUDITORY PERCEPTION
- INTEGRATION & TESTING OF AVIONICS SYSTEMS
- AIRCRAFT TRACKING
- FLIGHT PATH ANALYSIS
- COLLISION AVOIDANCE

Words about the team and it's efforts.....

ATA's background and experience in accident reconstruction and forensic engineering, coupled with CEO Robert Swint's former position with NASA as a lead project engineer during the Apollo and Shuttle programs, make for an outstanding technical and engineering "marriage" into the world of avionics and aerospace litigation support, analysis and testing.



[www.ataassociates.com](http://www.ataassociates.com)

281-480-9847

877-480-9846