

\* 3D image developed in Context Capture



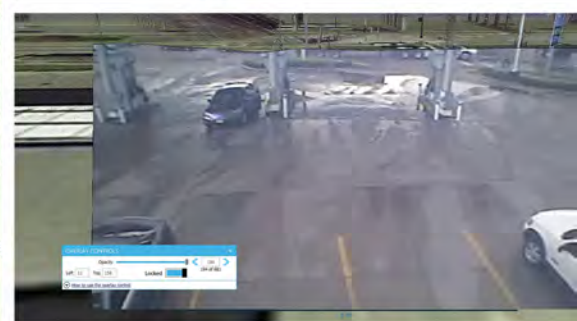
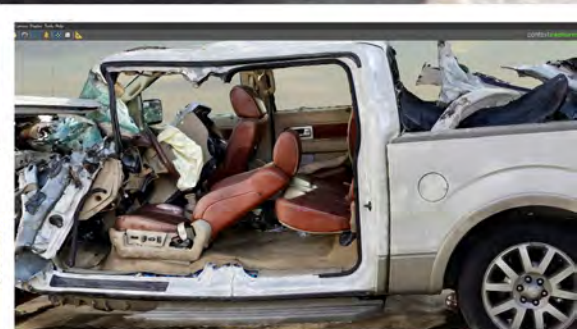
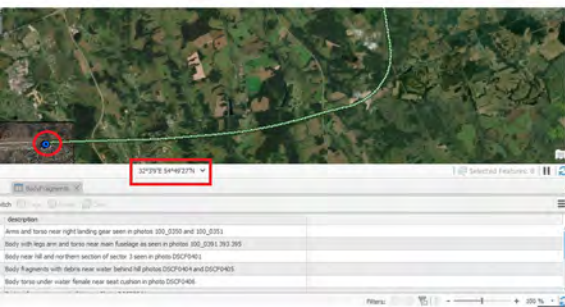
**ATA ASSOCIATES, INC.**  
**FORENSIC ENGINEERING**

**INTRODUCING:**

**AGA**

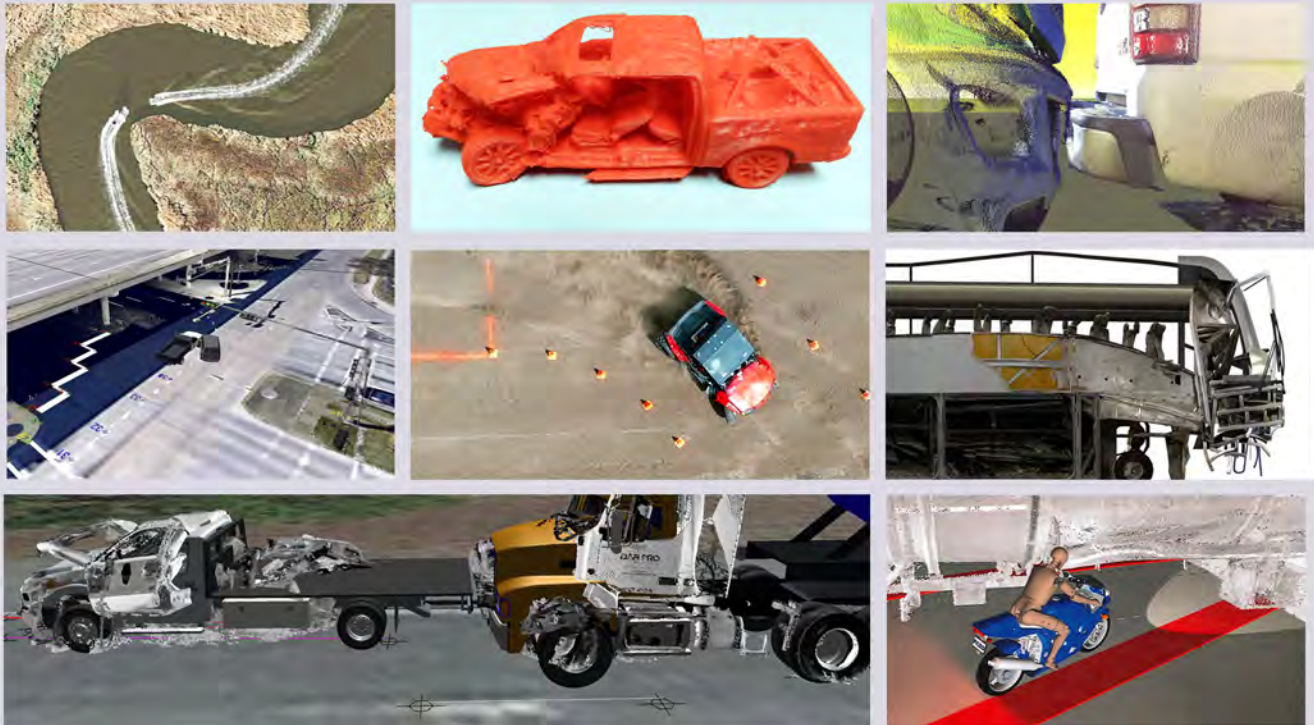
**APPLIED GRAPHICS ANALYSIS**

**ATA USES AN ENSEMBLE CAST OF THE LATEST IN GRAPHICS PROGRAMS, ANALYSIS TOOLS AND MULTIMEDIA SOFTWARE TO TELL YOUR STORY EFFECTIVELY, IMPACTFULLY AND EFFICIENTLY**

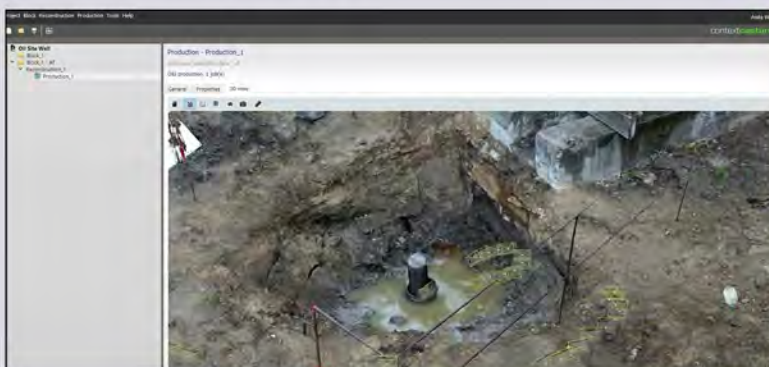




In recent years, there has been a proliferation of advanced 3D graphics instruments and programs that ATA staff has integrated into their workflow. These AGA programs consistently utilize more efficient processes to produce a higher quality, more visually impactful end product. This results in improved cost-value for our clients.



The introduction of these AGA technologies has increased both the scope and capabilities of our Quick Response Field Services. Because of the increasing demand for 3-dimensional graphic imagery, when ATA staff goes into the field, we prepare and equip ourselves toward that end. When performing inspections of incident sites, vehicles or relevant evidence, our documentation procedures involve the use of 3D digitizing equipment, high quality drones, ultra high-definition cameras, and phones equipped with Lidar 3D scanning capabilities.



Collected data can then be combined with surveillance video, satellite imagery, additional drone generated imagery, cell phone video, Google Earth images and other resources to develop a full range of graphic and 3-Dimensional imagery that is both visually stunning and data and content heavy.

ArcGIS, Context Capture, Cloud Compare, iNPUT-ACE, FARO Zone 3D, FARO Scene, Pix 4D, AutoCAD, Hidonix Navigation and Adobe Premiere are among the software programs that ATA utilizes to achieve positive results.

Give ATA a call today. We look forward to hearing from you, so we can work together to deliver success.

[www.ataassociates.com](http://www.ataassociates.com)